

SAPRAE CREEK NEWS



July 2022

ENGINEERING UPDATE

Project Name: L Robert Industrial Park Lift Station, Forcemain and A Frame Road Upgrades

Current status:

- Lift Station: Concrete pour for the dry pit and backfill around the lift station are pending.
- Forcemain: Forcemain construction is complete. Final tie-ins and backfill are pending.
- A-Frame Road: Topsoil restoration and ditch grading is ongoing. Asphalt paving to follow.

Progress since previous update

- Lift station: Membrane installation, rebar on dry pit floor, and installation of 375mm sewer have been completed.
- A-Frame Road: Culvert protective covering installed and assessment of the subgrade layer (proof rolling) has been completed.

Next steps:

- Backfill around lift station structure
- Dry pit concrete pour
- A-Frame Road paving

Expected Project Completion Date: September 30, 2023

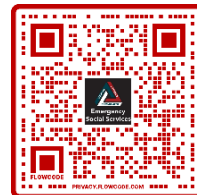


Emergency Social Services (ESS)

Emergency Social Services provides support during emergencies by providing a safe place for evacuees when they are displaced. Registration centres or other evacuation sites are set up provide accommodations, as necessary, for up to 72 hours as evacuees to plan their next steps as they transition to recovery.

Registration centres may provide the following services:

- Food/water
- Shelter
- Clothing
- First Aid/emotional support
- Family reunification
- Animal care and rescue assistance



To learn more about ESS, or to join the ESS Team, visit rmwb.ca/ESS or scan the QR code below:

VPR

Emergencies happen. If you are a vulnerable person living in the region, you may be at greater risk during an emergency.

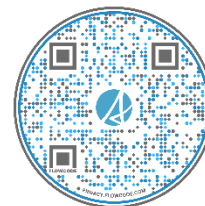


**Vulnerable
Persons
Registry**

The Vulnerable Persons Registry (VPR) is a service that improves the safety of vulnerable residents living at home. This is done by communicating directly with registrants during emergencies and by sharing key information to first responders about individuals on the VPR. Go to rmwb.ca/VPR to find out more.

MAERS

The MyAlberta Emergency Registration System is available to all residents of Alberta as a tool to assist during an evacuation or emergency. Albertans can register themselves and their family members in advance of an emergency using their MyAlberta Digital ID. Scan below to pre-register today.



Thunderstorm safety tips

It's summer in Alberta. That means thunderstorms can happen quickly. Here are some tips to help to keep you and your property safe:

Before the storm

- Follow local news and weather reports. If you know a storm is coming, secure loose objects outdoors in case of strong wind and cover your vehicle in case of hail. Unplug important electrical appliances.

When thunder roars – go indoors

- During a thunderstorm, seek shelter in a fully enclosed building with wiring and plumbing. Close and move away from windows and doors. Avoid using electrical equipment, as well as sinks, tubs, and showers.
- Stay inside. Wait 30 minutes after you hear the last rumble of thunder before going outside.
- There is no safe place outside during a thunderstorm. If possible, get to an appropriate shelter: a building or an enclosed vehicle. Do not shelter under trees or near metal objects.
- Water easily conducts electricity. If you are swimming or boating, get out of the water immediately.

Most summer thunderstorms are not a cause for major alarm. However, some do develop into stronger storms. Strong winds, heavy rains, flooding, damaging hail, and even tornados are possible threats. Please pay attention to weather warnings.

Be prepared

- Have an emergency plan and make a personalized preparedness emergency kit. Include practical items like drinking water, food, cash, and a portable radio, as well as items unique to your family's needs: baby items, medical prescriptions, pet food, and more.
- Download the Alertable app to receive emergency notifications.

*Adapted from the Government of Alberta, 2022



REGIONAL MUNICIPALITY
OF WOOD BUFFALO
EMERGENCY MANAGEMENT

Did you know there are general standards you must follow for your water delivery or sewer haul?

Your water and sewer tanks must:

- Be properly vented with a minimum capacity of 4,500 litres.
- Have an easily accessible fill point with a 50-millimetre (2-inch) camlock no less than 0.9 metres (36 inches) and no more than 1.2 metres (48 inches) from the surface labelled **WATER**.
- Include adequate protection to prevent surface water or foreign matter from entering the tank.

Here’s what to do for your scheduled water delivery or sewer haul.

- Post the date and volume of water required (in litres) in a visible place if no overfill is installed.
- Trim all low hanging branches and raise low hanging wires to provide access and prevent damage to delivery trucks.
- Provide clear access by removing vehicles and other obstacles on delivery day.
- Delivery truck must be able to drive within 15.24 metres (50 feet) from connection points.
- Ensure your water tank has a 2-inch camlock and your septic tank has a 3-inch camlock.
- Restrain dogs and other animals.
- Remove any animal waste from the area around your tank connection.

Need some help converting your water measurement into litres?

Gallons (gal)	Imperial gallons (imp gal)	Litres (L)
264	219	1,000
330	274	1,250
396	329	1,500
462	384	1,750
528	439	2,000
594	494	2,250
660	549	2,500
726	604	2,750
792	659	3,000
858	714	3,250
924	769	3,500
990	824	3,750
1,056	879	4,000
1,122	934	4,250
1,188	989	4,500
1,254	1,044	4,750
1,320	1,099	5,000

If you require any additional information, call Pulse at 780-743-7000 or toll-free at 1-800-973-9663.

Seasonal yard waste is now active and runs until September 30. To guarantee that your yard waste makes it to the landfill, please ensure it's placed inside designated brown paper yard waste bags and placed at the curb **beside your collection bins** on your regularly scheduled [collection day](#).



Each household can place **up to four bags** (16 kg) of yard waste at the curb each week for collection. If extra bags are placed on the curb, collection crews

will not have capacity to take them, and they won't be collected. Please **do not** place yard waste bags in front of your collection bins.

Please **do not** place yard waste inside of your collection bins or use plastic or compostable bags. These bags are not compatible with the shredding machines at the landfill.

Free yard waste drop-off available all year

If you have more yard waste than what can be accepted at the curb, you can drop it off for free at the public drop-off area at the Municipal landfill. This drop-off is available seven days a week from 8:15 a.m. to 5:45 p.m. For more information, visit rmwb.ca/yardwaste or contact Pulse at 780-743-7000 or toll-free at 1-800-973-9663.

Nominate a neighbour or business for their beautiful garden or floral display

Wood Buffalo Communities in Bloom's Nominate Your Neighbour summer program runs until Aug.15

How do I nominate my neighbour or a local business?

- Visit rmwb.ca/nyn
- Upload a picture and complete the online nomination
- Program closes August 15



Those nominated will be entered to win Scott's Miracle Gro products and receive a special thank you from the Wood Buffalo Communities in Bloom committee. They will also receive a lawn sign as recognition of their hard work and contribution to the beauty of the community. Photos of nominated homes and businesses may also be shared on Municipal social media accounts and website.



The 2022 Street Banner program is looking for artwork submissions

Calling all Wood Buffalo artists and creative individuals of all ages and skill levels! The 2022 Street Banner program is open and accepting artwork submissions until July 29.

Artwork will be selected by a panel of community organizations and the designs will be displayed on street banners throughout the Region from fall 2022 to spring 2023. Selected design recipients will receive a \$500 artist design fee and a screened banner.

Theme: Northern Spirit

Wood Buffalo is a dynamic region full of vibrant culture and diversity. This year's Northern Spirit theme is a celebration of the cultures, languages, traditions, history, sports, activities and landscapes that make up this beautiful place we call home.

Submissions can be digital, hand drawn or painted and must stay within the theme and program limitations. Only original artwork will be considered.

For more information about the program visit rmwb.ca/banners

Rural artists can contact their local Municipal Offices on weekdays between the hours of 9 a.m. and 4:30 p.m. for art paper pick up and to drop off completed submissions or the Community and Protective Services Department located on the 4th floor of the Jubilee Building (9909 Franklin Avenue).

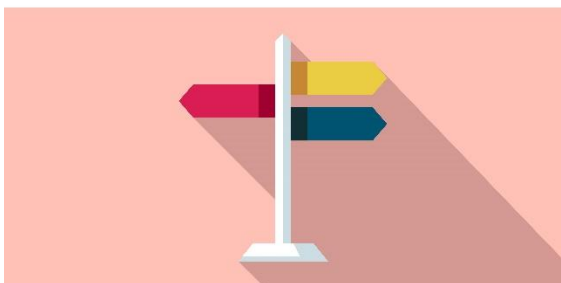
The deadline for submissions is 4 p.m. Friday, July 29, 2022

Wayfinding

Tell us!

WHAT'S WAYFINDING TO YOU?

rmwb.ca/wayfinding



The RMWB is creating a regional Wayfinding Strategy to set out guidelines to form future signage plans for neighbourhoods and communities. As well, a signage plan for downtown Fort McMurray, and the waterfront area.

Understanding community priorities, directional needs, culture and storytelling is important to gain from community members.

How do I provide feedback?

- Online survey
- Community Coffee Chats
- Lunch and Go: July 6
- Virtual Open House: July 19

To submit your ideas, thoughts or learn more visit participate.rmwb.ca/wayfinding.

Be safe on the water – be prepared

From canoeing to jet boating, boating is a popular recreational activity and mode of transportation in the RMWB. Regional Emergency Services asks all boaters to remember to be safe as they get back out on the water.



*The water is cold

In June, the water in our lakes and rivers is still very cold. If you fall in, hypothermia is a real threat.

- Wear an approved lifejacket or PFD and layered clothing for insulation. Avoid potentially dangerous weather conditions.
- Take all measures necessary to avoid capsizing your boat or falling into cold water in the first place.
- Carry all required boating safety equipment, as well as drinking water and snacks, survival tools, and clothing that protects you from the sun.

Alcohol and boating

Every year hundreds of people die as a result of boating-related activities. Almost 65% of these deaths involve the use of alcohol. There is no safe way to mix alcohol and drugs with boating.

Lifejackets, lifejackets and... lifejackets

Wear lifejackets or Personal Flotation Devices (PFDs). It's the law to carry one that fits each person in the vessel, but Red Cross recommends wearing it every trip, for the whole trip.

*Adapted from Canadian Red Cross information





Be *BearSmart* at home

- Never leave food out for wildlife.
- Always keep your garbage in a garage or in a bear-resistant container until it can be removed from your property.
- Remove bird feeders from your yard between April and October. Clean up spilled bird seed regularly.
- Store pet food indoors and bring in pet dishes overnight.
- Thoroughly clean barbecues after each use and store them in a garage.
- Cover compost piles with soil or lime or use an indoor compost.
- Ensure that all fruit and berries are removed from trees and shrubs as early as possible.
- Talk to your neighbours about being BearSmart at home.
- If there's a bear in your community, call the nearest Fish and Wildlife office at 310-0000 or, after business hours, the Report a Poacher line at 1-800-642-3800.




ISBN: 978 0 7785 9276 1 (Printed Version)
978 0 7785 9277 8 (Online Version)

Pub No. I/496

Revised February 2011

Photo Credit: Mike Ewald (bear image)
Travel Alberta (border image)

Government of Alberta ■

Saprae Creek Resident Society

Mark your calendars... **Town Tuesdays are back!**

A Woosh bus will take Saprae kids and youth ages 5-17 to town 7 times this summer.

Join us July 5, 12 & 19 and August 9, 16, 23 & 30

Watch the Saprae Creek Facebook page for activity details !





IMPORTANT CONTACT INFORMATION

PULSE (MUNICIPAL SWITCH BOARD)	1-800-973-9663 780-743-7000	PULSE@RMWB.CA	RMWB.CA/PULSE
COMMUNITY CONTACTS:		SOCIAL MEDIA:	
RCMP	780-788-4000	 @WOODBUFFALORURALCOMMUNITYCONNECTION  @RMWOODBUFFALO  @RMWOODBUFFALO	
FISH & WILDLIFE	780-743-7200		
HEALTH LINK	811		
ALL EMERGENCIES	911		

To submit information to the newsletter please email:

koralee.samaroden@rmwb.ca

Deadline for August newsletter submissions:

July 25th, 2022

Residents in rural communities can contact the Regional Municipality of Wood Buffalo 24/7 by contacting Pulse via the following:

- 780-743-7000
- 1-800-973-9663 (toll-free)



780-743-7000 • 1-800-973-9663
rmwb.ca/pulse

Call. Submit online.
 Real answers every time, all the time.



COMMUNITY EVENTS & PROGRAMS CALENDAR

SUN	MON	TUES	WED	THURS	FRI	SAT
					1  	2
3	4	5 Town Tuesday	6	7	8 	9
10	11	12 Town Tuesday	13	14	15 	16
17	18	19 Town Tuesday	20	21	22 	23
24	25 Newsletter Deadline	26 Town Tuesday	27	28	29 	30
31						