

# SAPRAE CREEK NEWSLETTER

## May 2019

---



## CONTACT INFORMATION

Editor: Joanne Clark  
Phone: 780-714-0316  
Email: [joanne.clark@rmwb](mailto:joanne.clark@rmwb)

June Newsletter Deadline:  
May 25<sup>th</sup>, 2019



Municipal Switchboard  
1-800-973-9663  
**RCMP**  
**780-788-4000**

By-Law: 780-762-5858  
Pulse Line: 780-743-7000  
Fish & Wildlife: 780-743-7200  
SPCA: 780-743-8997  
Health link: 811

For Septic Services: Call Andrew March @  
Day Time :780-743-7000  
After Hours: 780-598-6025

**ALL EMERGENCIES 911**

## SAPRAE CREEK RESIDENTS SOCIETY

<i>AnnMarie Hintz, Chair</i>	780-881-2958
<i>Tracy Unger, Vice-Chair</i>	780-743-3360
<i>Tanya Poulin Secretary</i>	780-715-6867
<i>Marilyn Rustad, Treasurer</i>	780-715-4960
<i>Brittany lanetti, Youth Director</i>	780-881-4061
<i>Shannon Sherk, Director</i>	

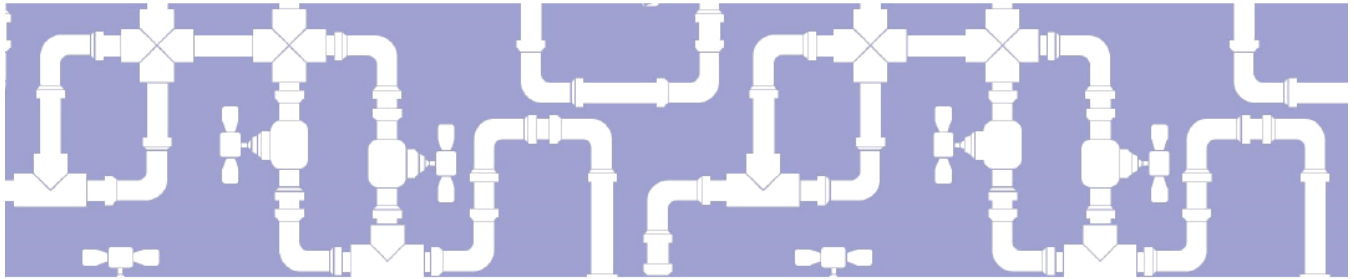
*Saprae Creek Residents Society*  
215 Freestone Way, Fort McMurray  
T9H 5B4

Email: [sapraecreek@gmail.com](mailto:sapraecreek@gmail.com)



## INSIDE THIS ISSUE

Contact Information 1-2  
RMWB Notices/News 3-17  
Kids' Corner 18  
Community Calendar 19



# Rural Water & Sewer Servicing (RWSS) Saprae Creek Estates Update

## SCHEDULE YOUR LOT ASSESSMENT: JUNE 1 – JUNE 30, 2019

It is important to note that the inspection is visual and only to assess future utility servicing. Measurements and photos will be taken to keep a record of our site inspection information. **At no time will RMWB staff, consultants or contractors enter any homes or structures.**

### Option 1:

Are you comfortable with your lot being assessed daily from 8 a.m. – 8 p.m.? If yes, visit [rmwb.ca/rwsslotalassessment](http://rmwb.ca/rwsslotalassessment) to sign an online permission slip.

### Option 2:

Do you want to be on your property during the assessment? If yes, then call Pulse 1-800-973-9663 to schedule an appointment.

## CONSTRUCTION

You will see work on the force main project in the early part of May on Community Lane and Weiss Drive. They will be directionally drilling and laying pipe down along the ditch. Minimal disruption to traffic is anticipated.

This season services on Freestone Way, Saprae Crescent, Weiss Drive, Sol Park Drive, Sommer Way, Janke Lane, Spruce Valley Gate, Conifer Way, Evergreen Pl. will be completed. Roadways that will see a complete rebuild will be Weiss to Community on SVD, Sol Park Dr, and Weiss Drive. All other roads will be patched and overlaid with top lift asphalt. Top lift asphalt and landscaping will be completed in 2020.

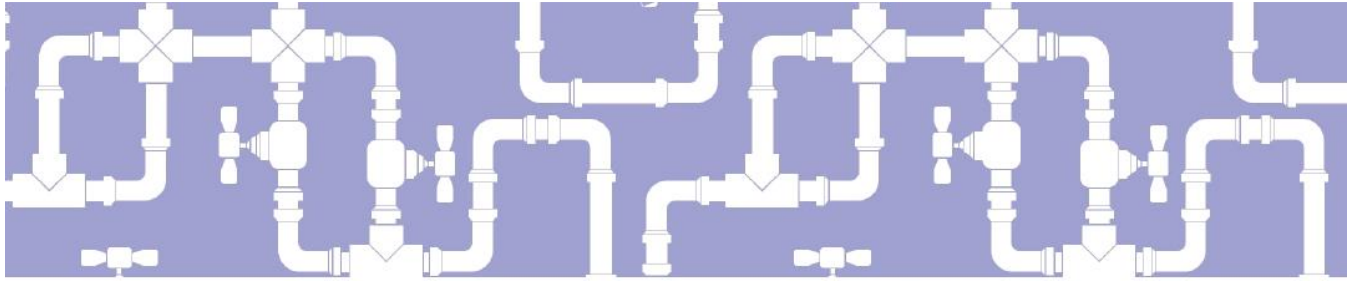
In addition, you can expect to see crews working on the steep corner on Spruce Valley Drive. Substantial completion on the lift station is scheduled for May 2020.

This will be a busy construction season for your community. Please account for delays in your commute and plan for extra time to get to your destination when entering or exiting the construction zones.

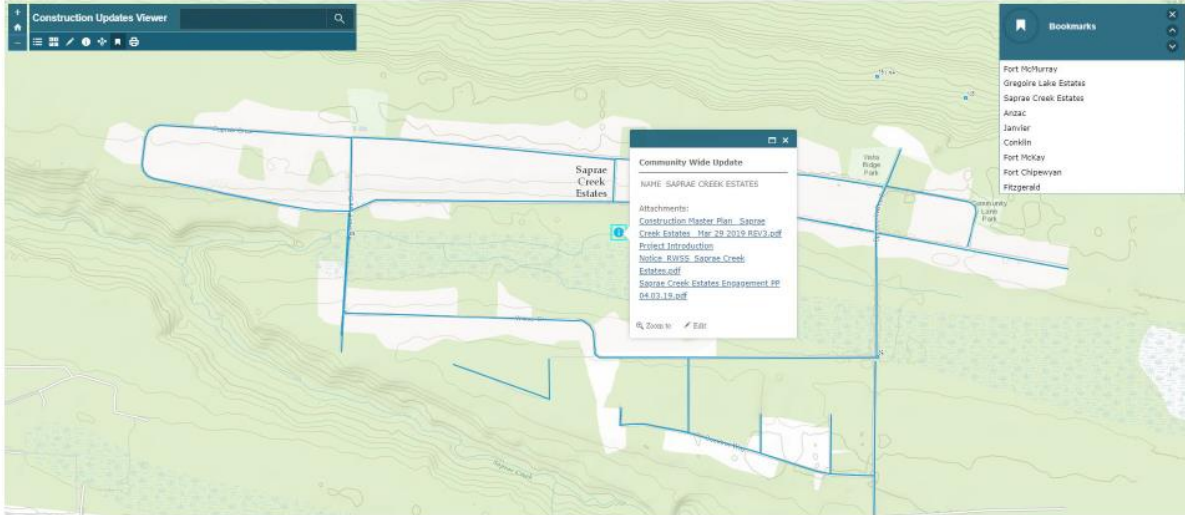
## PROJECT COMMUNICATION

This year, all construction notices will be delivered to your front door. Please check periodically for correspondence if you see construction crews nearing your home.





You can view project information and construction notices at [www.rmwb.ca/constructionmap](http://www.rmwb.ca/constructionmap).



Thank you to all who came out to the community engagement. If you missed this information session, please visit the construction map and click on your community wide update icon to view the construction master plan and the engagement power point presentation.

To allow our Engineering team to reply to your question, please submit your questions to Pulse by calling 1-800-973-9663 or visiting [rmwb.ca/pulse](http://rmwb.ca/pulse).

\*All timelines are subject to change due to weather conditions and unforeseen circumstances.





Dig out your large household items that need disposal and join us at one of the upcoming Big Bin Events throughout June.

Plan ahead and drop off your big items at one of the following events between 9 a.m. and 3 p.m.:

Community	Location	Date
Fort McMurray	10020 MacDonald Ave.	Sunday, June 2
Saprae Creek	Community Mailboxes	Saturday, June 8
Anzac	Municipal Office	Saturday, June 15
Gregoire Lake Estates	Community Mailboxes	Saturday, June 22
Fort McMurray	Brett Drive	Saturday, June 29

This free service allows residents the opportunity to dispose of large household items, which cannot be set out for regular waste collection, such as large furniture, appliances renovation materials (wood, countertops, tiles, etc.) and yard waste.

The Solid Waste Services team will be on-site to support the collection and unloading of items.

Electronic waste (E-Waste) such as computers, televisions and other electronics will also be accepted for recycling. Household hazardous waste such as used oil, paints and batteries will also be accepted for environmentally friendly disposal.

**Also note that refrigerators/freezers/air conditioners/water coolers will be subject to a \$42.90 fee for CFC removal. Mattresses and box springs are also subject to a \$20 fee (per piece) for disposal.**

**Residents will require photo ID and proof of address before depositing for these items.** Find out everything you need to know at [www.rmwb.ca/bigbin](http://www.rmwb.ca/bigbin).



## ESS VOLUNTEER RECRUITMENT INFORMATION

### WHAT IS ESS?

Emergency Social Services (ESS) is a planned emergency program designed to provide evacuees and emergency personal with essential services in the event of a community emergency. ESS also works closely with other organizations that are called upon to provide support when necessary.

### WHO ARE ESS VOLUNTEERS?

ESS volunteers are a dedicated group of people who prepare for, and respond to provide short term disaster relief in the event of fires, floods, or other emergencies. A commitment of approximately 4 - 12 hours per month is required for meetings, training and exercises. More hours may be required during emergencies or disasters. We offer a great program with training in personal preparedness as well as a number of courses which are geared toward specific ESS Functions.

The following are the requirements to register as an Emergency Program volunteer:

- 18+ years of age & in good health.
- ESS volunteers need to have their own transportation to arrive where needed.
- Have a phone and email address in order to receive updates, and training.
- Compassionate, adaptable, responsible, be able to communicate effectively with good listening skills.
- Be comfortable working in a structured environment during emergencies.

### WHAT DO WE DO?

- We provide support for food, clothing, lodging, emotional needs, and family reunification during disasters.
- Attend team meetings, participate in team planning and activities.
- Designate local facilities; schools and churches, as reception centers or group lodging facilities.
- Network with local organizations to provide clothing, food, health services, and lodging
- Take part in exercises and ongoing training at regular intervals.
- Assist in the recruiting and training of volunteers.

### WHEN THERE'S AN EMERGENCY...

The ESS team will open a *Reception Centre* in a facility suitable to the needs of the disaster. Registration and inquiry areas will be set up to register and reunite victims. Team members will coordinate with support organizations to provide suitable clothing, food, and lodging to those who require them. When emergencies occur trained members take the lead in response. coordinate with support.

### TRAINING

Members of ESS are asked to complete basic online training within three months of joining the team. These courses are Introduction to ESS, Incident Command System 100, and Basic Emergency Management. Many ESS training courses have the option to complete from home, online, & all are free of charge to ESS members. Members are encouraged to take advantage of training opportunities regularly.

**Rural hamlets with 6 or more community members interested in volunteering will have the opportunity to receive training locally.**

**If you are interested in volunteering, please email [ESS@rmwb.ca](mailto:ESS@rmwb.ca).**



# Planting trees on your property this spring or summer?

## You could be eligible for a community grant from Tree Canada.

For the third consecutive year, Tree Canada is providing community grants to residents, Indigenous groups and local community groups in the region, who are looking to re-plant trees lost in the May 2016 Horse River Wildfire.

Eligible applicants could receive up to \$500 per household and up to \$3,000 per community or Indigenous group to re-plant trees on private property. All trees must meet FireSmart guidelines in order to qualify.

The deadline to apply is June 3, 2019.

Find the online application at [rmwb.ca/trees](http://rmwb.ca/trees).

**Remember -**

Planting on Municipal property is prohibited.

## Attend an Information Session

Tree Canada and the Municipality will be hosting a free information session on **May 11, 2019 from 11 p.m. to 2 p.m. at Lions Park**. This information session will provide helpful workshops on:

- How to complete the Tree Canada grant application
- FireSmart-approved tree species and planting principles
- Proper tree planting techniques

To register for this event, or to learn more about FireSmart-approved tree species, head to [rmwb.ca/trees](http://rmwb.ca/trees).

To apply for a community grant, or to learn more about Tree Canada's #OperationReLeaf - Fort McMurray program, visit [treecanada.ca/fortmacreleaf](http://treecanada.ca/fortmacreleaf).



## Tree Talk – Tip of the Month

### Branching out for better tree care in our communities

#### Soil Compaction - A silent threat to trees

As the snow continues to melt, there is a lot of excess moisture in the ground, which makes the risk of soil compaction extremely high. Compaction has many negative effects on tree growth. Healthy soils are around 50% pore space, which is vital for root development. Pore space allows water to infiltrate and percolate through the soil – just like coffee or tea. Space encourages movement of nutrients, allows air and gas exchanges, and is home to all the organisms that make up the soil food web.



Did you know that the Municipality has tree doctors that can help identify issues and recommend solutions?

Visit [rmwb.ca/treecare](http://rmwb.ca/treecare)

Or contact Pulse toll free at 1-800-973-9663





**VENDOR INFORMATION SESSION**  
 Wednesday May 15<sup>th</sup>, from 5:30–6:30 p.m.  
**McMurray Experience – 9909 Franklin Ave.**



## June 2019

Monday	Tuesday	Wednesday	Thursday	Friday	Saturday	Sunday
					1	2
3	4	5	6	7	8 Uptown Farmers' Market	9
10	11	12 Urban Market	13	14	15 Downtown Farmers' Market	16
17	18	19 Urban Market	20	21	22 Uptown Farmers' Market	23
24	25	26 Urban Market	27	28	29	30

Urban Market    
  Uptown Farmers' Market    
  Downtown Farmers' Market

Urban Market @ Jubilee Plaza 11a.m.– 6 p.m.  
 Uptown Farmers' Market @ Holy Trinity HS Parking Lot 10a.m.–2p.m.  
 Downtown Farmers' Market @ Jubilee Plaza 10a.m.–2p.m.



## RFID Tags in Curbside Collection Bins

In May 2019, curbside collection crews will begin installing RFID (radio frequency identification) tags onto curbside collection bins.

The tags will allow for the Municipality to provide enhanced customer service with more specific information in response to questions about curbside collection service and bins. These tags will allow the municipality to provide feedback and guidance so you'll avoid any issues with bin placement, timing of placement to curb, tracking lost bins, and sorting of waste items.

## What to Expect?

Beginning in May, as curbside collection crews empty your bins, a secondary crew will follow them to install and program the tags. As your bins will already be out at the curb, all you need to do is follow your regular routine.

Please keep bin placement and timing guidelines in mind, so your bins are to the curb by 7:30 a.m. on your collection day. For more information on bin placement or schedules, visit [www.rmwb.ca/garbage](http://www.rmwb.ca/garbage).

## Who is impacted?

These tags will be applied to all bins that are part of the curbside collection program. Please note condos, businesses and industry do not fall under this program.

The following communities are included in the RFID program as they fall under the existing curbside collection program: Anzac, Draper, Fort McMurray, Gregoire Lake Estates and Saprae Creek.

If you are unsure if this impacts you, contact Pulse for more specific details at 780-743-7000, or 1-800-973-9663 (toll free), or online at [rmwb.ca/pulse](http://rmwb.ca/pulse).

Learn more about RFID tags at [www.rmwb.ca/rfid](http://www.rmwb.ca/rfid).

### **NOTICE OF PUBLIC HEARING**

NOTICE is hereby given that the Council of the Regional Municipality of Wood Buffalo has scheduled a Public Hearing to take place on Tuesday, May 14, 2019 at 4:00 p.m. in the Jubilee Centre Council Chamber, Fort McMurray, relative to the following:

#### **Bylaw No. 19/011 – Fees Amending Bylaw**

Bylaw No. 19/011 proposes to amend the user fees and charges set out in a number of bylaws, including Land Use Bylaw No. 99/059. The fees charged by the Municipality for various services, licenses, permits and approvals will be incorporated into a single Fees, Rates and Charges Bylaw (Bylaw No. 19/010).

A copy of the above-noted Bylaw and all related documents may be inspected by contacting the Finance Department (3<sup>rd</sup> Floor, Jubilee Centre, Fort McMurray); or Legislative Services (7<sup>th</sup> Floor, Jubilee Centre, Fort McMurray), between 8:30 a.m. and 4:30 p.m., Monday to Friday. Bylaw No. 19/011 is also available on the Municipality's website at [www.rmwb.ca/hearings](http://www.rmwb.ca/hearings).

#### **If you would like to appear before Council:**

- You must forward a request to the Chief Legislative Officer, clearly stating your support or opposition of the Bylaw, along with any related information, by:
  - Registering on-line at [www.rmwb.ca/publichearingsubmission](http://www.rmwb.ca/publichearingsubmission);
  - Emailing [Legislative.Assistants@rmwb.ca](mailto:Legislative.Assistants@rmwb.ca); or
  - Calling Legislative Services at 780-743-7001.
- Ensure that your correspondence includes your address, and a telephone number or e-mail address at which you may be contacted.
- All submissions must be received by the Chief Legislative Officer by **12:00 noon, Wednesday, May 8, 2019**.

**Please note any information you submit to Council for their consideration at Public Hearings is added in its entirety to the agenda, which is made available to the public and posted on the Municipality's website.**

DATED at Fort McMurray, Alberta this 26<sup>th</sup> day of April, 2019.

Jade Brown  
Chief Legislative Officer  
Regional Municipality of Wood Buffalo  
9909 Franklin Avenue  
Fort McMurray, AB T9H 2K4  
Phone: (780) 743-7001  
Fax: (780) 743-7028  
Email: [Legislative.Assistants@rmwb.ca](mailto:Legislative.Assistants@rmwb.ca)

## Walking Safety Tips

**Walk Facing Traffic:** If there is no sidewalk and you must walk on the side of the road, choose the side where you are facing oncoming traffic. This gives you the best chance to see traffic approaching closest to you and take evasive action if needed.

**Cross Safely:** Mom was right; look both ways before crossing any street. Make eye contact with any drivers who may be turning. Give them a wave. Make sure they see you

**Walk Single File:** Unless you are on a sidewalk separated from the road or a wide bike lane, you should walk in single file. This is especially important on a road with many curves, where traffic has only a split-second chance of seeing you before hitting you. While it can be enjoyable to walk down the road two to three abreast chatting merrily, drivers don't expect it and you may lose your best buddies.

**Stay Aware of Bikes and Runners:** Share the road and path with bikes and runners. Bike riders should alert you when approaching from behind with a bike bell or a "passing on the left/right." Listen for them, and move to walk single file, allowing them to pass safely. Runners should also call out for passing. Bike-walker collisions can result in broken bones or head injuries for either, and you aren't wearing a helmet.

**Be Visible:** Wear bright colors when walking in daytime. When walking at night, wear light-colored clothing and reflective clothing or a reflective vest to be visible. Drivers are often not expecting walkers to be out after dark, and you need to give them every chance to see you, even at the street crossings that have crossing signals. Be just as cautious at dawn or twilight, as drivers still have limited visibility or may even have the setting or rising sun directly in their eyes.

**Hang Up and Eyes Up:** Chatting or texting while walking is as dangerous as doing those things while driving. You are distracted and not as aware of your environment. You are less likely to recognize traffic danger, passing joggers and bikers or tripping hazards. Potential criminals may also see you as a distracted easy target.



## **Art in Motion seeking Indigenous culture art submissions**

McMurray Experience wants to feature local Indigenous art in the Art in Motion exhibit this June. The theme is celebrating Indigenous cultures, and what better way to do that is to feature local Indigenous artists.

Art in Motion is a unique opportunity for local artists and residents to display and showcase their work and collections. Submissions may be in the form of paintings, sculptures, memorabilia, photographs — anything that artistically expresses an individuals' interpretation of the exhibition's theme.

Twelve pieces will be chosen and featured in the Art in Motion Ferris wheel. To submit your idea of celebrating Indigenous cultures in Wood Buffalo, visit [rmwb.ca/AIM](http://rmwb.ca/AIM) to fill out the online submission form.

Art in Motion cannot accept works that require or contain liquids, living items, electricity, batteries or combustible materials.

# Spring Community Cleanup **PICK UP & PITCH IN!**

## April 15 to May 15




**HELP CREATE A LITTER-FREE WOOD BUFFALO!** Registration is now open for this year's spring campaign. Residents, friends, schools, businesses and neighbours are encouraged to show their community spirit by volunteering to clean up their favourite park, green space, block, trail or roadway.

**PICK AND CLICK CONTEST**  
Snap a photo of your group, send it to us and you could win a prize from the Fort McMurray Home Hardware Building Centre!

Bags, gloves and picker sticks supplied. To register or to submit Pick and Click photos, please visit [rmwb.ca/cleanup](http://rmwb.ca/cleanup).

**FOR MORE INFORMATION:**  
Call 780-743-7000 or email [beautification@rmwb.ca](mailto:beautification@rmwb.ca)

 Find us on Facebook: WBB beautification



REGIONAL MUNICIPALITY  
OF WOOD BUFFALO





**Calling all artsy rural residents:  
Chance to be featured on street banners**

If you think you can capture the past in art, the Regional Municipality of Wood Buffalo is offering an opportunity for local residents to express their creativity. Fort McMurray history is the theme for this year’s Street Banner Program.

Five designs will be chosen and transformed into banners to brighten up our communities. These banners will be displayed within Fort McMurray and the rural communities until spring 2020. Each resident it allowed one submission.

Artwork must be submitted on a specific type of paper, which can be picked up at the RMWB rural office locations, the Syncrude Clubhouse or the McMurray Experience. For more information on how to participate, visit [rmwb.ca/bannerprogram](http://rmwb.ca/bannerprogram).

Submit artwork and completed release forms to McMurray Experience (9909 Franklin Avenue) or Syncrude Clubhouse (101 Cartier Drive) by Monday, May 13.

## Putting the sanitary back into sanitary service

Do you rely on sanitary sump pump service?

Water and wastewater services are important for everyone.

But did you know that animal waste in the vicinity of the sanitary tank pump can have health and safety risks for operators?

To ensure we can continue to provide this service to you safely, please clean up after your pets if they leave their poop in area.

Animal waste can be harmful if it isn't disposed of properly.

How to dispose properly?

Be sure to double-bag when disposing of any pet waste.

Your help keeping the area clear of pet waste will help us continue to provide this service to you.

Learn more at [www.rmwb.ca/animalwaste](http://www.rmwb.ca/animalwaste)

Questions? Contact Pulse toll free at 1-800-973-9663.



## RMWB News/Notices



Very important reminder:

Your Garbage & Recycling bins should be placed out by the curb by 7:30am every Friday. (Except for statutory Holidays).

Please remove garbage bins off the road or shoulder after your bins have been emptied, pull them back onto your property.

Household waste (**BLACK**) will be emptied every week.

Recycling Bins (**LIGHT BLUE**: paper and cardboard & **DARK BLUE**: metal, drink containers) will be emptied alternate weeks.

## May Dates for Garbage Bins are:



**Friday May 3<sup>rd</sup>, 10<sup>th</sup>, 17<sup>th</sup>, 24<sup>th</sup>, 31<sup>st</sup>**



**Friday May 10<sup>th</sup>, 24<sup>th</sup>**



**Friday May 3<sup>rd</sup>, 17<sup>th</sup>, 31<sup>st</sup>**

## Kids/Youth Corner



## May Community Calendar

Sun	Mon	Tues	Wed	Thurs	Fri	Sat
			1	2	3	4
5	6	7	8	9	10	11
12	13	14	15	16	17	18
19	20	21	22	23	24	25
26	27	28	29	30	31	

Saprae Creek’s ON-GOING FUNCTIONS:

[Mondays Nights:](#) Saprae Creek Volunteer Fire Department Training

[Fridays Garbage Days:](#)

[Fridays Saprae Youth Group Programs:](#) Subject to Change depending on weather

